

URBANA  
BLOCK 12

William E. Florkel	Lot 1	48,000 Sp. Ft.
Carous Dry Bottling Co	Lot 2	48,000 Sp. Ft.
Gerrig & Lilla Voss	W 10' of Lot 12	14,200 Sp. Ft.
Maria C & Joseph Bellina & SS	12	12,600 Sp. Ft.
Linda H. Davis	13	8,500 Sp. Ft.
N C & Laura Davis	15	28,800 Sp. Ft.
Timmo & Vanda Madison	18	16,200 Sp. Ft.
Thomas & Lura St. Germain	20	9,600 Sp. Ft.
BLOCK 2		
Wilo & Naomi Fowler	Lot 1	8,600 Sp. Ft.
Milton Rogers	2	12,200 Sp. Ft.
Jack & Marjorie Ensign	E 50' of Lot 4	8,000 Sp. Ft.
Marie Ensign	W 10' of Lot 4	11,200 Sp. Ft.
Libby Walker	6	8,600 Sp. Ft.
F.O. Spangley	7	2,600 Sp. Ft.
Elvis & Margaret Nottingham	8	18,200 Sp. Ft.
Frank & Helen Calloun	S 1/2 of Lot 9	9,600 Sp. Ft.
	S 1/2 of Lot 10	
James & Vella Stinson	11	8,748 Sp. Ft.
Vella N. Stinson	12	8,748 Sp. Ft.
William & Marie Faston	13	8,748 Sp. Ft.
Arnold & Doris Ware	14	9,600 Sp. Ft.
George & Lilla Voss	15	9,600 Sp. Ft.
Cloral E. Taylor	16	9,600 Sp. Ft.
Placido Navar	17	9,600 Sp. Ft.
R.H. & Margaret Stackton	19	9,600 Sp. Ft.
John & Nabel Miller	20	9,600 Sp. Ft.
RANCHO SAN BERNARDINO		
BLOCK 12, LOTS 10 THROUGH 14		
(ASSESSOR'S MAP BOOK 136 PAGES 09 & 14)		
(Assessors Lot No.)		
George & Lilla A. Voss	①	1.6 Ac.
6189 Weich's Overall Cleaning Co.	②	0.89 Ac.
George & Lilla Voss	③	1.5 Ac.
Toe Douglas & T. Wayne Reeder	④	0.76 Ac.
Tom & Lura Douglas	⑤	9,000 Sp. Ft.
George & Lilla Voss	⑥	3.5 Ac.
George Wasson	⑦	10,950 Sp. Ft.
6190 City of San Bernardino	⑧	0.64 Ac.
T. Wayne & Dixie Reeder	⑨	16,500 Sp. Ft.
George & Lilla Voss	⑩	15.3 Ac.
	Lot 12	
	15	
	14	

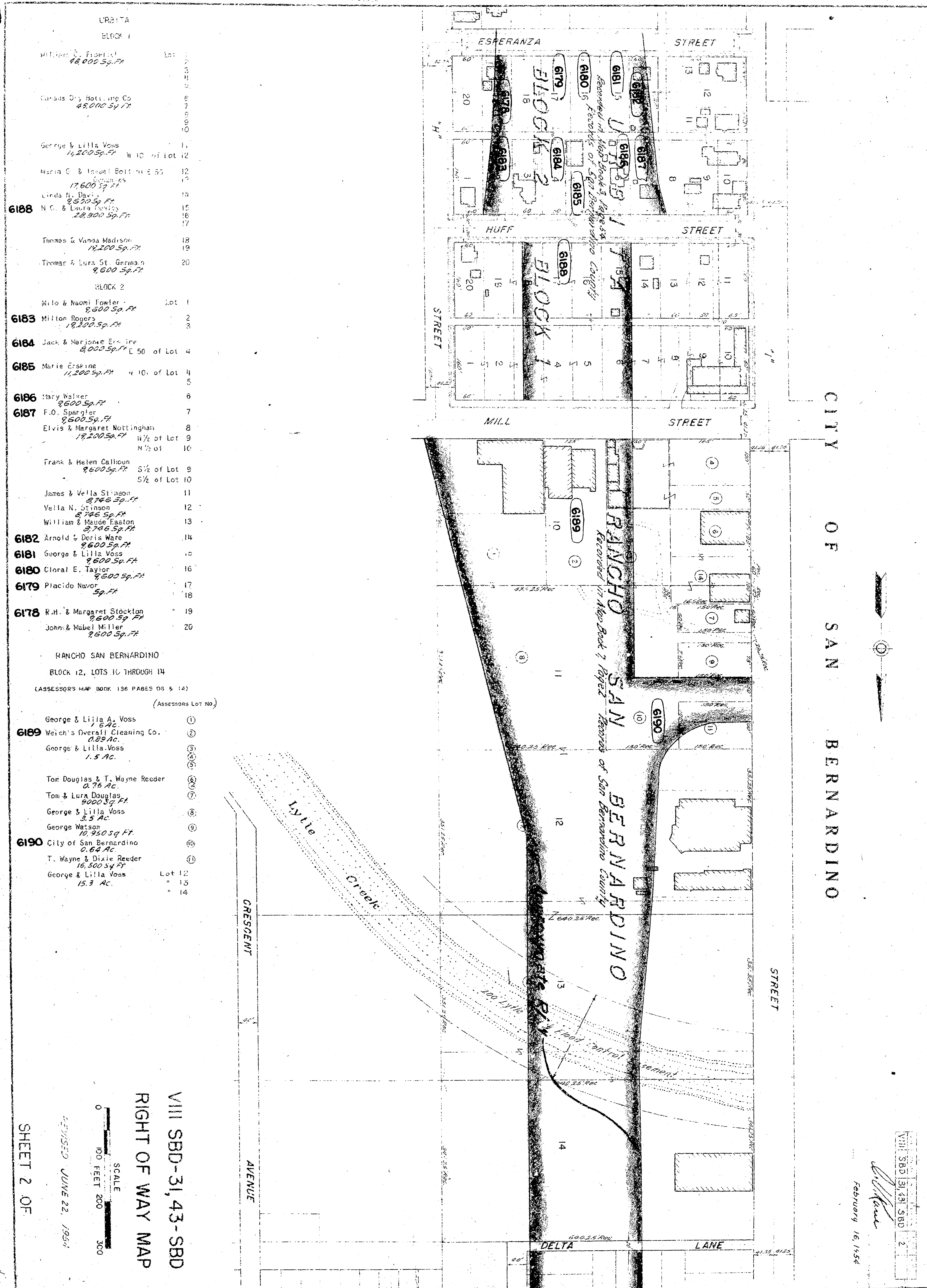
VIII SBD-31, 43-SBD  
RIGHT OF WAY MAP  
SHEET 2 OF

SCALE  
0 100 200 300  
FOOT

REVISED: JUNE 22, 1954

CITY OF SAN BERNARDINO

VIII SBD 31, 43 SBD 2  
February 16, 1954



URBANA  
BLOCK 1

William E. Florkel	Lot 1	48,000 Sp. Ft.
Carous Dry Bottling Co	Lot 2	48,000 Sp. Ft.
Gerrie & Lilla Voss	W 10 of Lot 12	14,200 Sp. Ft.
Maria C & Joseph Bellina & SS	12	12,600 Sp. Ft.
Linda H. Davis	13	8,500 Sp. Ft.
N C & Laura Davis	15	28,500 Sp. Ft.
Timmo & Vanda Madison	18	16,200 Sp. Ft.
Thomas & Lura St. Germain	20	9,600 Sp. Ft.
BLOCK 2		
Wilo & Naomi Fowler	Lot 1	8,600 Sp. Ft.
Milton Rogers	2	12,200 Sp. Ft.
Jack & Marjorie Enline	E 50 of Lot 4	8,000 Sp. Ft.
Marie Enline	W 10 of Lot 4	11,200 Sp. Ft.
Libby Walker	6	8,600 Sp. Ft.
F.O. Spangley	7	2,600 Sp. Ft.
Elvis & Margaret Nottingham	8	18,200 Sp. Ft.
Frank & Helen Calloun	S 1/2 of Lot 9	9,600 Sp. Ft.
James & Vella Stinson	11	8,746 Sp. Ft.
Vella N. Stinson	12	8,746 Sp. Ft.
William & Marie Faston	13	8,746 Sp. Ft.
Arnold & Doris Ware	14	9,600 Sp. Ft.
George & Lilla Voss	15	9,600 Sp. Ft.
Cloral E. Taylor	16	9,600 Sp. Ft.
Placido Navar	17	9,600 Sp. Ft.
R.H. & Margaret Stackton	19	9,600 Sp. Ft.
John & Nabel Miller	20	9,600 Sp. Ft.

RANCHO SAN BERNARDINO  
BLOCK 12, LOTS 10 THROUGH 14  
(ASSESSOR'S MAP BOOK 136 PAGES 09 & 14)  
(Assessor's Lot No.)

George & Lilla A. Voss	①	1.6 Ac.
6189 Weich's Overall Cleaning Co.	②	0.89 Ac.
George & Lilla Voss	③	1.5 Ac.
Toe Douglas & T. Wayne Reeder	④	0.76 Ac.
Tom & Lura Douglas	⑤	9,000 Sp. Ft.
George & Lilla Voss	⑥	3.5 Ac.
George Wasson	⑦	10,950 Sp. Ft.
6190 City of San Bernardino	⑧	0.64 Ac.
T. Wayne & Dixie Reeder	⑨	16,500 Sp. Ft.
George & Lilla Voss	⑩	15.3 Ac.

VIII SBD-31, 43-SBD  
RIGHT OF WAY MAP  
SCALE  
1" = 200 FEET  
REVISED: JUNE 22, 1954  
SHEET 2 OF 2

CITY OF SAN BERNARDINO

VIII SBD 31, 43 SBD 2  
February 16, 1954